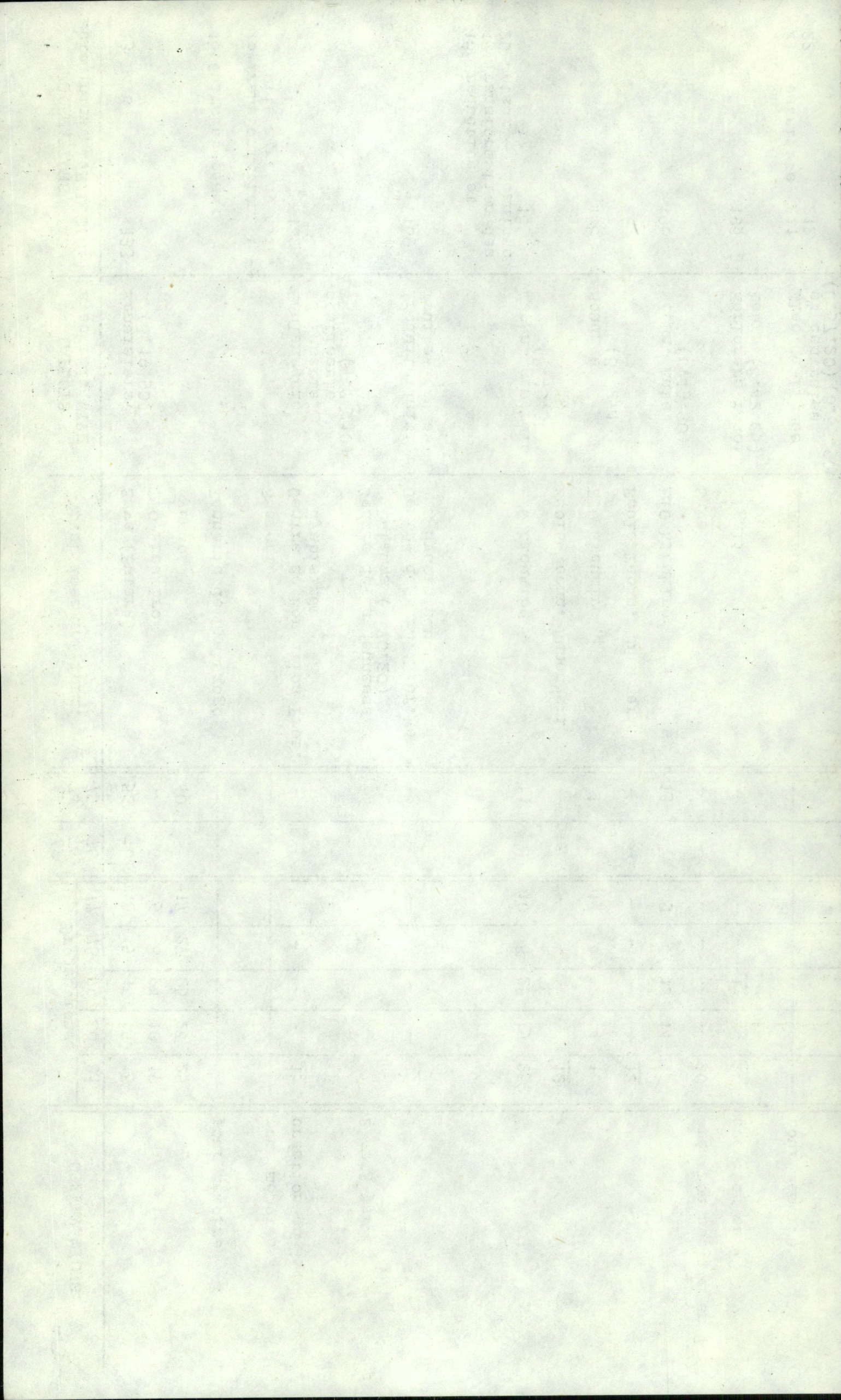


| FORMATION (selon classif. I. E. D. E. S) | EMPLOIS avec réf. C.I.T.P | Etablissement formateur | Prévisions | | | | | | OBSERVATIONS | | |
|---|---|---|-------------------|-------------------|------|------|------|------|--------------|--|--|
| | | | réf. 74/ 75 | réf. 75/ 76 | 77 | 78 | 79 | 80 | | 81 | |
| 06 Animation Dévelop. rural | employés admin. acheteurs (4.22.10) | CENAC Centre de Murambi | 17 | - | - | - | - | - | - | projet militaires | |
| | encadreurs | Centre de Murambi | - | - | 28 | - | - | - | - | | |
| | Moniteurs agri (vulgarisateurs) | MINAGRI (sur le terrain) | - | - | - | - | - | - | - | perfection./spécialis.: 2.532 sur 5 ans | |
| | Mon.agri.vulgar. Agron.Assist.Vét. Assist. agric. | CERBAR (sans déperdition) | - | 344 | 442 | 649 | 1100 | 1400 | 1550 | effectifs 75.76 : 1435 " : 4980 | |
| 1-2 SCIENTIFIQUES et TECHNIQUES | Bacheliers es Sciences | Sections Familiales (sans déperdition) | - | 1533 | 2054 | 2848 | 2900 | 3000 | 3200 | effectifs 75.76 : 6455 " : 7800 | |
| | | Licenciés es Sciences UMR (0.22.20) Ingénieurs civils des constructions | Centre de Murambi | 10 | 10 | 20 | 22 | 24 | 25 | 25 | 189 Bach. Sc/pendant pé- riode Plan mais 148 iront 2ème cycle (Sc. Agro-Sc. Appl.) |
| | Topographes (0.33.30) | Save | 10 | 12 | - | - | 12 | 9 | 9 | | |
| | Maçons (9.51) | Save Butare | 22 | 22 | 22 | 20 | 20 | 20 | 20 | 20 | |
| | "Construction" | EFO Kicukiro A3 " TP (A2) Ecole Technique Ruhengeri ou Gikongoro ? (ou Byumba) | - | 10 | 9 | 18 | 34 | 25 | 25 | 25 | création en 77 ou 78 |
| | Plombiers (8.71.05) | Save | - | - | - | - | - | - | - | 12? | création section en 78 |
| | Personnel station pomp.et épur. céramique (8.92) | ELECTROGAZ Ecole de céramique (ex Gasagara) | - | - | - | - | - | - | - | 20 | pour mémoire réouverture 1978 à Kigali ou Butare |

| Date | Description | Particulars | Debit | Credit |
|------|-------------|-------------|---------|---------|
| 1891 | Jan 1 | Balance | | 100.00 |
| | Feb 1 | By Cash | 50.00 | |
| | Mar 1 | To Cash | | 25.00 |
| | Apr 1 | By Cash | 75.00 | |
| | May 1 | To Cash | | 100.00 |
| | Jun 1 | By Cash | 125.00 | |
| | Jul 1 | To Cash | | 150.00 |
| | Aug 1 | By Cash | 175.00 | |
| | Sep 1 | To Cash | | 200.00 |
| | Oct 1 | By Cash | 225.00 | |
| | Nov 1 | To Cash | | 250.00 |
| | Dec 1 | By Cash | 275.00 | |
| | Total | | 1000.00 | 1000.00 |



1911

1912

1913

1914

1915

1916

1917

1918

1919

1920

1921

1922

1923

1924

1925

1926

1927

1928

1929

1930

1931

1932

1933

1934

1935

1936

1937

1938

1939

1940

1941

1942

1943

1944

1945

1946

1947

1948

1949

1950

1951

1952

1953

1954

1955

1956

1957

1958

1959

1960

1961

1962

1963

1964

1965

1966

1967

1968

1969

1970

1971

1972

1973

1974

1975

1976

1977

1978

1979

1980

1981

1982

1983

1984

1985

1986

1987

1988

1989

1990

1991

1992

1993

1994

1995

1996

1997

1998

1999

2000

2001

2002

2003

2004

2005

2006

2007

2008

2009

2010

2011

2012

2013

2014

2015

2016

2017

2018

2019

2020

2021

2022

2023

2024

2025

2026

2027

2028

2029

2030

2031

2032

2033

2034

2035

2036

2037

2038

2039

2040

2041

2042

2043

2044

2045

2046

2047

2048

2049

2050

2051

2052

2053

2054

2055

2056

2057

2058

2059

2060

2061

2062

2063

2064

2065

2066

2067

2068

2069

2070

2071

2072

2073

2074

2075

2076

2077

2078

2079

2080

2081

2082

2083

2084

2085

2086

2087

2088

2089

2090

2091

2092

2093

2094

2095

2096

2097

2098

2099

2100

2101

2102

2103

2104

2105

2106

2107

2108

2109

2110

2111

2112

2113

2114

2115

2116

2117

2118

2119

2120

2121

2122

2123

2124

2125

2126

2127

2128

2129

2130

2131

2132

2133

2134

2135

2136

2137

2138

2139

2140

2141

2142

2143

2144

2145

2146

2147

2148

2149

2150

2151

2152

2153

2154

2155

2156

2157

2158

2159

2160

2161

2162

2163

2164

2165

2166

2167

2168

2169

2170

2171

2172

2173

2174

2175

2176

2177

FORMATIONS

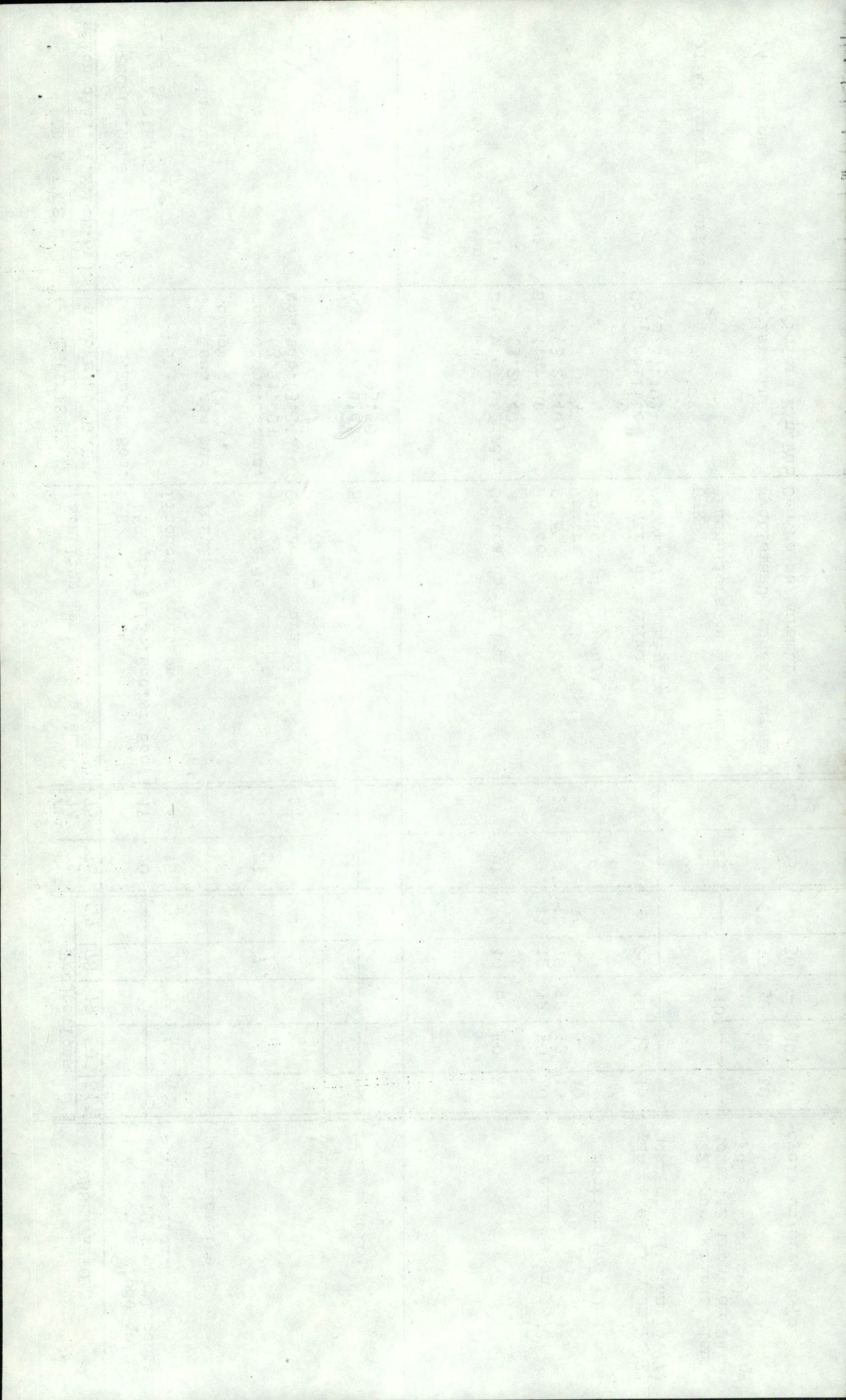
EMPLOIS

Etablissement formateur

| réf 74/ 75 | réf 75/ 76 | 77 | 78 | 79 | 80 | 81 |
|------------------|------------------|----|----|----|----|----|
|------------------|------------------|----|----|----|----|----|

OBSERVATIONS

| selon clas. I.E.D.E.S.) | avec réf. C.T.P.P | | | | | | | | | |
|------------------------------------|---|---|----------|--------|----------|----------|----------|----------|----------|---|
| 4 ECONOMIQUES FINANCIERES | 40 Eco.Sc.Ec.et Soc. | UNR (Bach. ès Sc.Eco.et Soc) Licenciés gestion | 17 | 20 | 38 | 53 | 55 | 59 | 59 | 184 pour période quinq. mais 119 iront licence Sc. gestion. |
| 48 Finances | Commissaires aux comptes (1.10.20) | Miniplan | | | | | | | | pour mémoire |
| 43 Banques | rec.compt.commun. (3.31.90) comptab.(3.31.10) | Centre de Murambi Centre de Murambi Banques Populaires | 51 | 27 | - | ? | | | | pour mémoire |
| 48 Assurances | employés d'assur. (3.93.50) | SONARWA | | | | | | | | pour mémoire |
| 5 ADMINISTRATIVES et JURIDIQUES | | | | | | | | | | |
| 50 Emplois de bureau | 501 Dactylo (sténod.) (3.21.40) | Centre de Muhima | | 30 | 110 | 40 | 60 | 50 | 40 | |
| | 502 Secrétariat (3.21.40) | Nyundo Rwaza Centre de F.P. Féminine Collège de Gisenyi Ruhengeri | 14 21 | 9 7 | 13 10 | 12 10 | 12 12 | 30 12 | 30 15 | + 2 classes en 1978 |
| | 503 Comptabilité (3.31.10) | Centre de Muhima Compt.OCAM Miniplan | | 30 | - | 20 | 10 | 15 | 15 | ? 1 section (78 ?) |
| 51 Administr. générale | | UNR Bacheliers ès Lettres | 6 | 25 | | | 110 | | | pas de section en 76/77 pour mém. (66 en 76.77) |
| 54 Justice | Magistrats Officiers Min.Pub | Nyabisindu (annexe Murambi) Centre de Murambi | 25 13 | 23 | 68 | 30 | 30 | 30 | 30 | 222 pour période Plan dont 112 iront en 2è cycle (licence) |
| | | | | | | | | | | cycle en Mars 1978 |



FORMATIONS

EMPLOIS

Etablissement formateur

Projections

OBSERVATIONS

(selon clas. I.E.D.E.S)

avec réf. CITP

592 droit
Poste

UNR

Centre de P. Postale Gisen.

réf. 74/75

réf. 75/76

10

10

26

34

?

10

?

10

27

10

6 MEDICALES et SOCIALES

60 Médecine

Médecins (Doc. en médéc.)
Fac. de médéc.
(0.61.40)

13

13

?

18

43

45

45

45

Bacheliers Biol.hum. (3a)

16

20

20

20

20

20

20

20

Assist.Médicaux
(0.62.10)

Kigali Biol.hum.
Butare (méd. moy.)
Collège St André (?)
Gitarama méd. moy.

18

20

20

20

20

20

20

20

Nemba
Kigali
Ecole Prof.de Kibungo
Mugonero (privé)

?

7

19

25

25

25

25

Infirmières
(0.71.10)

Sc.Infirmières

12

12

11

11

11

11

11

12

Kabgayi
Rwamagana

15

13

19

15

15

20

20

10

ESSI

12

12

11

11

11

11

11

12

Inf.accouc.hosp.
(0.73.10)

auxiliaires
(0.74.10)

12

13

19

15

15

20

19

20

Labo
Butare diplômées
moyenne

Kirinda
Rwamagana

30

32

32

32

32

32

32

32

604

Assist.et Mon.Soc
Monit.(0.93.10)

Mon.soc.et comm-
munes

16

19

19

18

18

18

18

18

63 Service social

Mon.soc.et comm-
munes

Butare diplômées
moyenne

20

27

26

28

28

28

28

28

Karubanda inférieure
moyenne

28

19

27

18

25

(24)

(24)

(24)

Centre Nutrit.Fuhengeri
Minisanté

15

15

15

15

15

15

15

15

64 Hygiène

Techn. assainis.
" auxiliaires

Centre Nutrit.Fuhengeri
Minisanté

15

15

15

15

15

15

15

15

projet 1979 (adm. 20)

projet form. en 2 ans

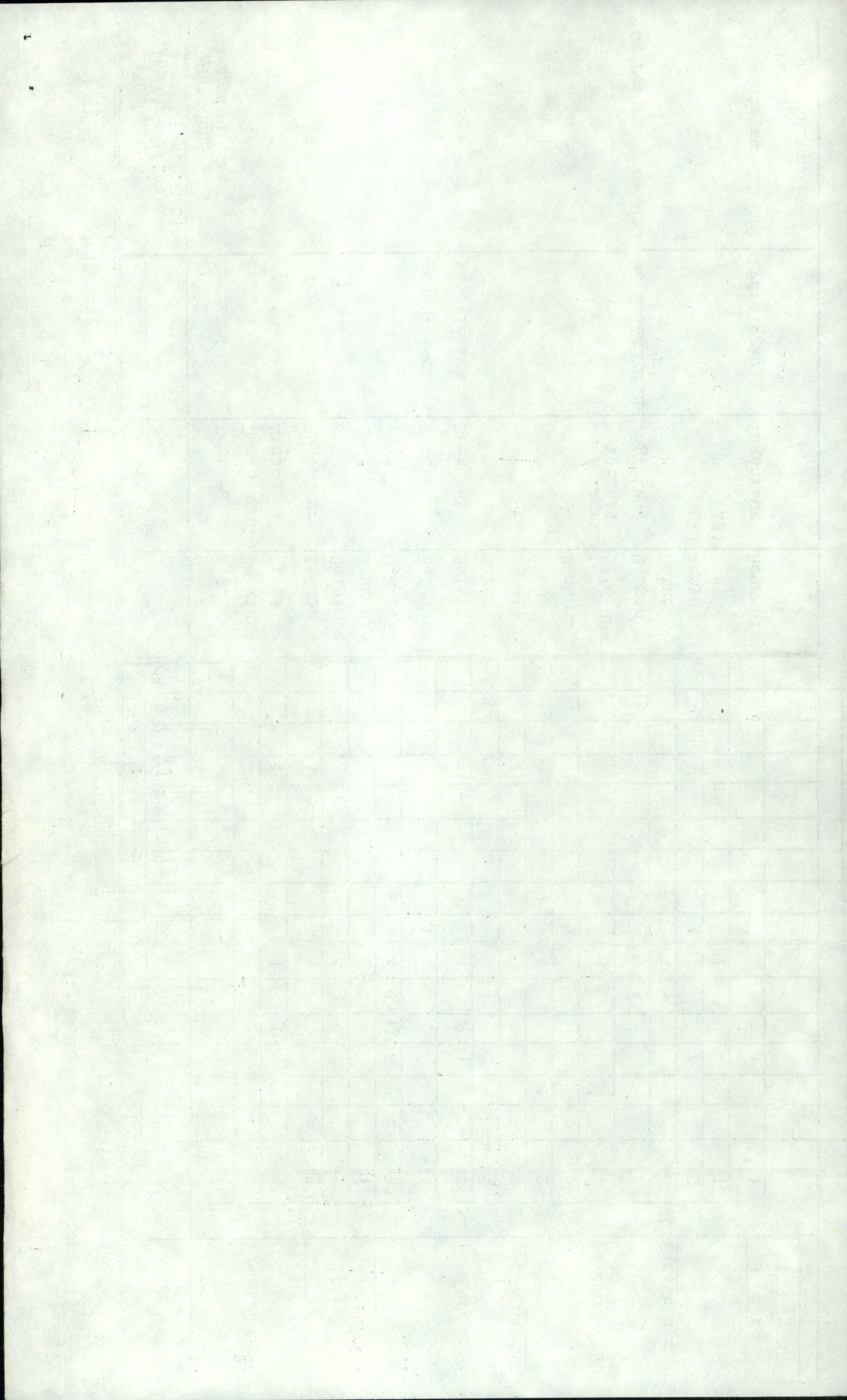
auxiliaires de santé (?)

fermeture en 1978

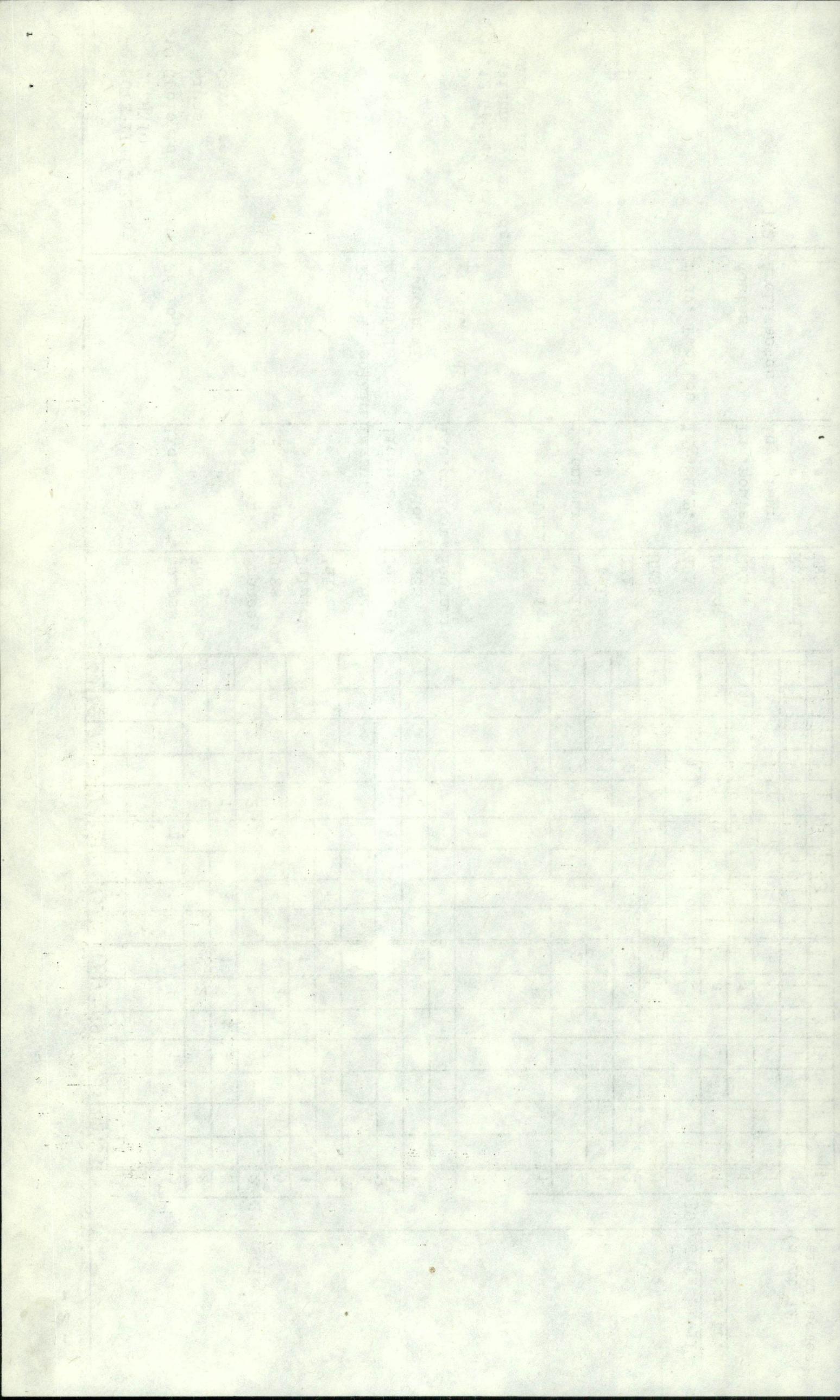
projet 1979 (adm. 20)

329 d'ici avril 1978

renseignement non obtenus
15 (sur 24 mois)
150 (sur 12 m) avec déper-
dition 14%



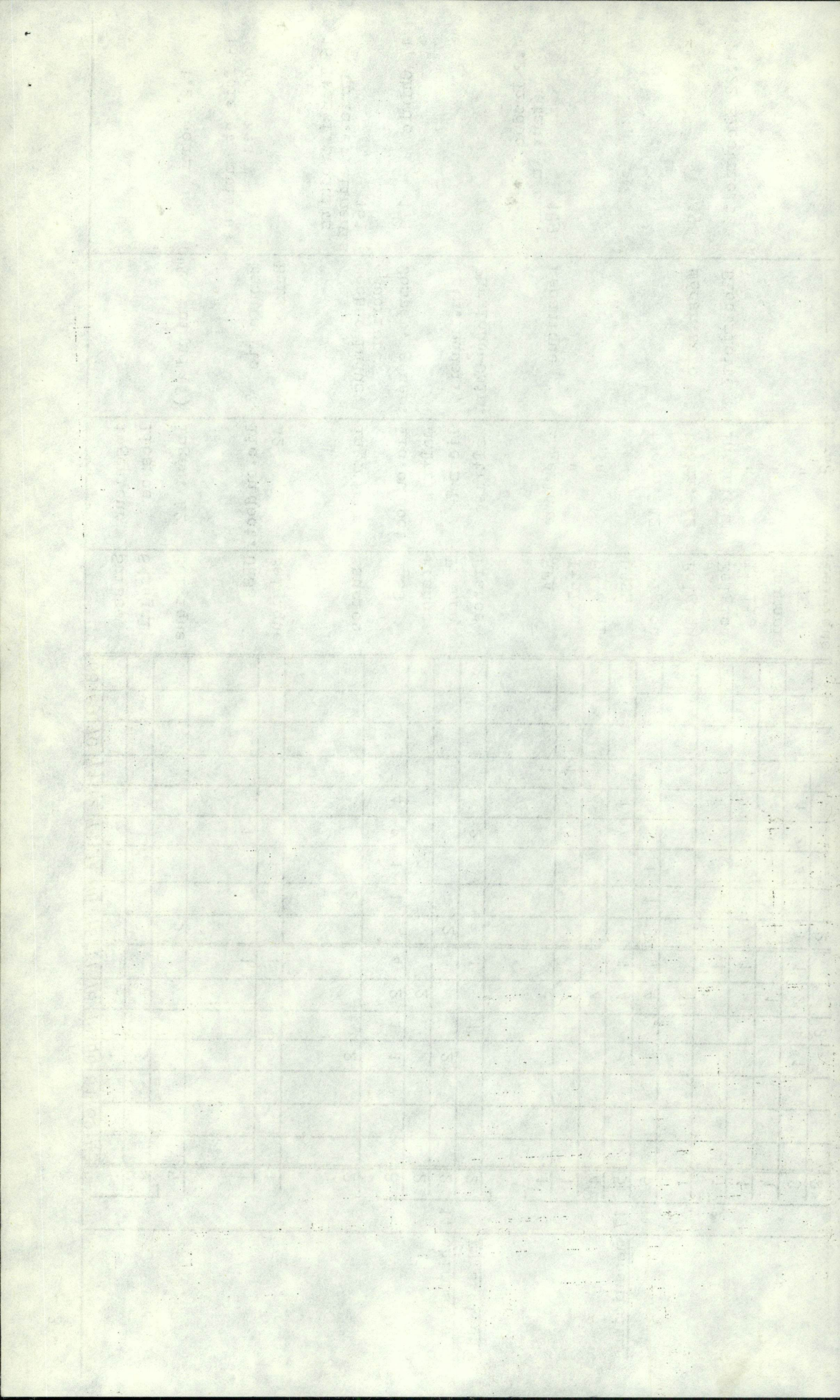
| 1-2 SCIENTIFIQUES et TECHNIQUES | | | | | | | | | | | | | | | | | | | | | | | | |
|---|-----|----------------------------|---------------|-----------------------------|----|----|----|----|----|----|----|----|----|----|----|----|----|----|----|----|---|--|--|--|
| 10 Géologie | 101 | Géologie | Lic. ou doct. | Suisse | 68 | 69 | 70 | 74 | 72 | 73 | 74 | 75 | 76 | 77 | 78 | 79 | 80 | 81 | 82 | 83 | | | | |
| Mines | | " | " | Roumanie | | | | | 2 | | | | | 2 | | | | | | | 2 | | | |
| Carrières | | " | " | URSS | | | | | 1 | 4 | 3 | | | 1 | | 4 | 3 | | | | 2 | | | |
| | | maîtrise | | France | | | | | 2 | | | | | | 2 | | | | | | 2 | | | |
| | | ingénieur | | URSS | | | | | 1 | 2 | 1 | | 1 | 2 | 1 | 1 | | | | 1 | 5 | | | |
| | | " | " | Belgique | | | | | | | | | | | | | | | | | 1 | | | |
| | | " | " | Zaire | | | | | | | | 1 | | | | | 1 | | | | 1 | | | |
| 109 Divers | | Energie solaire | ingén. spéc. | France | | | | | | | | 1 | | 1 | | | | | | | 1 | | | |
| | | géochimie | licence | Suisse | | | | | 1 | | | | | 1 | | | | | | | 1 | | | |
| | | agronomie | lic. ou doct. | URSS | 1 | | | | | | | | | 1 | | | | | | | 1 | | | |
| | | géologie géo-graph. hydro. | lic. ou doct. | Roumanie | | | | | | | | 1 | | | | 1 | | | | | 1 | | | |
| 11.12 Génie civil - Bâtiment - mat. de construction | 111 | génér. constructions | ingén. civil | Belgique | | | 1 | | | | | | | 1 | | | | | | | 1 | | | |
| | | | ingénieur | Belgique | | | 2 | | | | | | 2 | | | | | | | | 2 | | | |
| | | | " | Italie | | | 1 | | | | | | | | | 1 | | | | | 1 | | | |
| | | | " | RFA | | | 2 | | | | | | 2 | | | | | | | | 2 | | | |
| | | | " | URSS | 1 | | | 2 | 1 | 4 | | | 3 | 1 | 4 | | | | | | 8 | | | |
| | | Trav. Publics | Ing. T.P. | RFA | | | 1 | | | | | | 1 | | 1 | | | | | | 2 | | | |
| | | Routes | Ing. routes | RFA | | | | | | 1 | | | | 1 | | | | | | | 1 | | | |
| | | Architectes | ingénieur | RFA | | | 1 | | | | | | | 1 | | 1 | | | | | 1 | | | |
| | 112 | | " | Roumanie | | | | | | 1 | | | | | | | 1 | | | | 1 | | | |
| | | | " | URSS | | | | | | 3 | 3 | | | | | | | | | | 6 | | | |
| | | | | 30 génie civil bât. constr. | | | | | | | | | | | | | | | | | | | | |
| | | | | (dont 12 architectes) | | | | | | | | | | | | | | | | | | | | |
| | | | | 21 géologues | | | | | | | | | | | | | | | | | | | | |



| | 68 | 69 | 70 | 71 | 72 | 73 | 74 | 75 | 76 | 77 | 78 | 79 | 80 | 81 | 82 | 83 | | |
|--|----|----|----|----|----|----|----|----|----|----|----|----|----|----|----|----|---|-------------------------------|
| 1.2 Technique | | | | | | | | | | | | | | | | | 5 | "Technique" (?) |
| 13 Bois et matières connexes 131 | | | | | | | | | | | | | | | | | 1 | Menniserie ? |
| 16 Transf. produits agric. et aliments 161 | | | | | | | | | | | | | | | | | 2 | Bois |
| 17 Chimie 171 | | | | | | | | | | | | | | | | | 8 | Techno indus. sucrière |
| 1.2 Produc. Transf. métaux - mécan. 189 | | | | | | | | | | | | | | | | | 1 | Compét. génér. |
| | | | | | | | | | | | | | | | | | 1 | Chim. industr. Physique-Chim. |
| | | | | | | | | | | | | | | | | | 1 | Mécanique |
| | | | | | | | | | | | | | | | | | 1 | ingénieur |
| | | | | | | | | | | | | | | | | | 1 | " |
| | | | | | | | | | | | | | | | | | 4 | " |
| | | | | | | | | | | | | | | | | | 5 | " |
| | | | | | | | | | | | | | | | | | 5 | lic. ou doct. |
| | | | | | | | | | | | | | | | | | 2 | maîtrise |
| | | | | | | | | | | | | | | | | | 2 | licence |
| | | | | | | | | | | | | | | | | | 2 | maîtrise |
| | | | | | | | | | | | | | | | | | 2 | Chim. industr. Physique-Chim. |
| | | | | | | | | | | | | | | | | | 2 | Mécanique |
| | | | | | | | | | | | | | | | | | 2 | ingénieur |
| | | | | | | | | | | | | | | | | | 2 | " |
| | | | | | | | | | | | | | | | | | 2 | " |
| | | | | | | | | | | | | | | | | | 2 | techn. A2 |
| | | | | | | | | | | | | | | | | | 2 | techn. A2 |
| | | | | | | | | | | | | | | | | | 2 | techn. A2 |
| | | | | | | | | | | | | | | | | | 2 | ingénieur |
| | | | | | | | | | | | | | | | | | 2 | " |
| | | | | | | | | | | | | | | | | | 2 | " |
| | | | | | | | | | | | | | | | | | 2 | " |
| | | | | | | | | | | | | | | | | | 2 | A2 |
| 196 | | | | | | | | | | | | | | | | | 1 | Mécan. Auto |
| 21.22 Electricité | | | | | | | | | | | | | | | | | 1 | Electricité |

14 chimistes et physiciens

17 mécaniciens

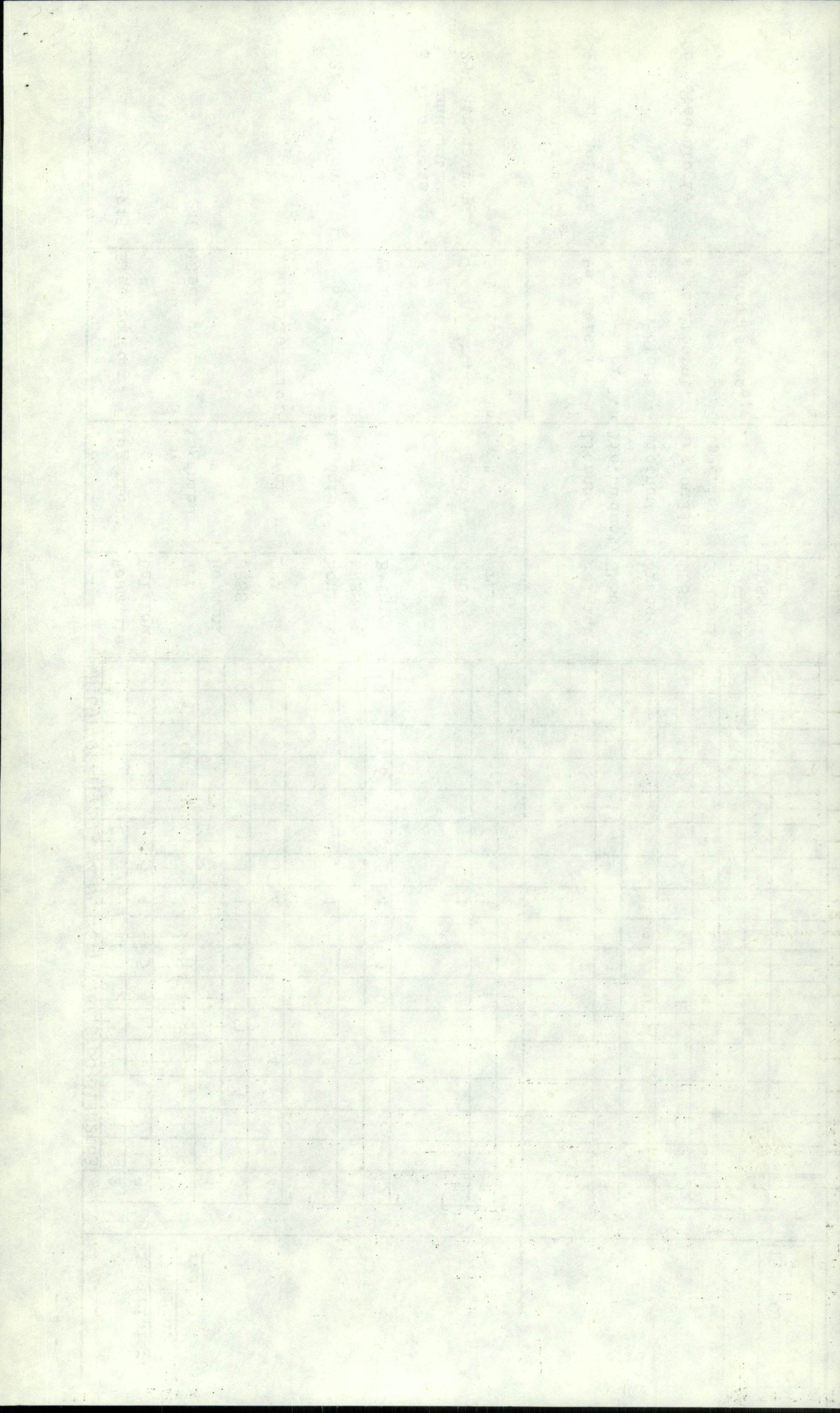


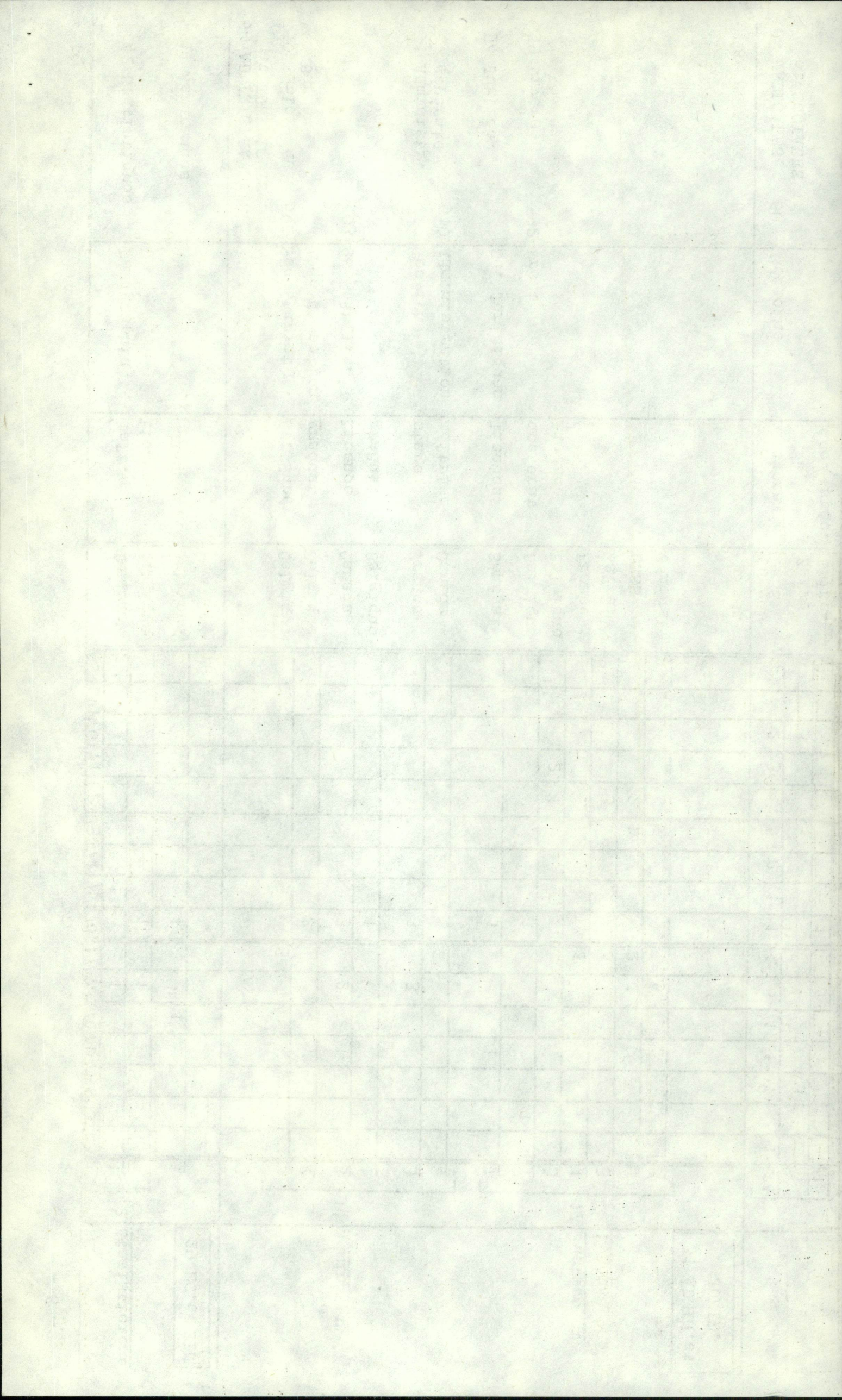
| | 68 | 69 | 70 | 71 | 72 | 73 | 74 | 75 | 76 | 77 | 78 | 79 | 80 | 81 | 82 | 83 | |
|-------------------------------|----|----|----|----|----|----|----|----|----|----|----|----|----|----|----|----|----|
| 215 Electromécan. | | | | | | 2 | | | | | | | | | | | 2 |
| | | | | | | | 5 | 4 | | 5 | 4 | | | | | | 9 |
| | | | | | | | | | | | | | | | | | 33 |
| 218 Electronique | | | | | | | | | | | | | | | | | 1 |
| | | | | | | 1 | | | | | | | | | | | 1 |
| | | | | | | | 1 | 1 | | | | 1 | 1 | 1 | | | 3 |
| 2. Polytechnique | | | | | | | | 4 | | | | | | | | | 4 |
| | | | | | | | | | | | | | | | | | 1 |
| | | | | | | | | 1 | | | | | 1 | | | | 1 |
| 23. Transports et manutention | | | | | | | | | | | | | | | | | 1 |
| | | | | | | | | | | | | | | | | | 1 |
| | | | | | | | | | | | | | | | | | 15 |
| 234 Aéronautique | | | | | | | | | | | | | | | | | 1 |
| | | | | | | | | 1 | | | | | | | | | 1 |
| | | | | | | | | 1 | | | 1 | | | | | | 2 |
| 25 Sciences humaines | | | | | | | | | | | | | | | | | 1 |
| | | | | | | | | | | | | | | | | | 1 |
| | | | | | | | | | | | | | | | | | 2 |
| 251 Psychologie | | | | | | | | | | | | | | | | | 1 |
| | | | | | | | | | | | | | | | | | 1 |
| | | | | | | | | | | | | | | | | | 1 |
| 26 Météorologie | | | | | | | | | | | | | | | | | 1 |
| | | | | | | | | | | | | | | | | | 1 |
| | | | | | | | | | | | | | | | | | 1 |
| | | | | | | | | | | | | | | | | | 7 |

Electriciens
Electron.
radio

Météorologues

158 SCIENTIF.
et TECHN.





| | | | | | 68 | 69 | 70 | 71 | 72 | 73 | 74 | 75 | 76 | 77 | 78 | 79 | 80 | 81 | 82 | 83 | | | | | | |
|--|-----------------|---------------|----------|--|----|----|----|----|----|----|----|----|----|----|----|----|----|----|----|----|-----------------|---|---|---|---|---|
| "Domaine médic." Sc. hosp. et infr. Médecine | Perf. chirurgie | ? | Roumanie | | | | | | | | | | 1 | | | | | | 1 | | 1 | | | | | |
| | | | Belgique | | | | | 1 | | 2 | | 1 | 2 | | | | | | | | | 3 | | | | |
| | | | Belgique | | | 1 | | | | | | | | | | 1 | | | | | | | 1 | | | |
| 601 Sc. Infirmières | Infirmières | Lic. ou doct. | URSS | | | | | | 2 | | | | | | | | | | | | 3 | | | | | |
| | | | Roumanie | | | | | | | | 1 | | | | | | | | | | | | 3 | | | |
| | | | Belgique | | | | | | | | | 3 | 1 | | 3 | 1 | | | | | | | 4 | | | |
| 603 Adm. Nursing | Assist. labor. | Licence | Canada | | | | | | | | | 1 | | | | | | | | | 1 | | | | | |
| | | | Belgique | | | | | | | | 2 | | | | 3 | | | | | | | | 3 | | | |
| 604 Médec. sport. Kinésithérapie | doctorat | A1 | Belgique | | | | | | | | | | 1 | | | | | | | | 1 | | | | | |
| | | | Belgique | | | | | | | | | | | | | | | | | | | | 1 | | | |
| 609 Biol.-Ecologie | doctorat | Lic. ou doct. | Belgique | | | | | | | | | | | | | | | | | | | | | | | |
| | | | Italie | | | | | | | | | | 1 | | | | | | | | | | 1 | | | |
| 610 Sciences dent. | Licence | Licence | Belgique | | | | | | | | | 1 | | | | | | | | | | | | | | |
| | | | Belgique | | | | | | | | | | | | | | | | | | | | 1 | | | |
| 62 Pharmacie | 620 | diplôme | Belgique | | | | | | | | | 1 | | | | | | | | | | | | | | |
| | | | URSS | | | | | 2 | | | | | | | | | | | | | | | 2 | | | |
| | | | URSS | | | | | | | | | | | | | | | | | | | | | 3 | | |
| 63 Service social | 63 | grad. ou lic. | Belgique | | | | | | | | | | 2 | | | | | | | | | | | | | |
| | | | Belgique | | | | | | | | | | | | | | | | | | | | | 2 | | |
| | | | Canada | | | | | | | | | | | 2 | | | | | | | | | | | 2 | |
| 64 Hygiène | 64 | maîtrise | Canada | | | | | | | | | | | | | | | | | | | | | | | |
| | | | Canada | | | | | | | | | | | | | | | | | | | | | | 2 | |
| | | | Belgique | | | | | | | | | | | | | | | | | | | | | | | 2 |
| Diététique Sc. hospitalières | 64 | Licence | Belgique | | | | | | | | | | | | | | | | | | | | | | | |
| | | | Zaire | | | | | | | | | | | | | | | | | | | | | | | 1 |
| | | | Belgique | | | | | | | | | | | | | | | | | | | | | | | |
| 9 | | | | | | | | | | | | | | | | | | | | | 26 | | | | | |
| <u>Pharmaciens</u> | | | | | | | | | | | | | | | | | | | | | <u>Médecins</u> | | | | | |
| partis en 1966 | | | | | | | | | | | | | | | | | | | | | partis en 1966 | | | | | |

61 MEDEC.
et SOC.

7- PEDAGOGIQUES

71 Enseignement général

| | 68 | 69 | 70 | 71 | 72 | 73 | 74 | 75 | 76 | 77 | 78 | 79 | 80 | 81 | 82 | 83 | |
|----------------------|----|----|----|----|----|----|----|----|----|----|----|----|----|----|----|----|---|
| Pédag. Sociol. | | | | 1 | 2 | | 4 | | | 2 | 1 | 4 | | | | | 6 |
| Psycho-pédag. | | | | | 1 | | 1 | | | | 1 | 1 | | | | | 1 |
| " | | | | | | | | | | | | | | | | | 1 |
| " | | | | | | | | | | 1 | | | | | | | 1 |
| Pédagogie | | | | | | | | | 2 | | 2 | | | | | | 2 |
| Sc. de l'Educat. | | | | | 7 | | | | | 7 | | | | | | | 7 |
| Mathématiques | | | | | | | | 1 | | | 1 | 1 | | | | | 1 |
| doctorat | | | | | | | | 2 | | | | 2 | | | | | 2 |
| maîtrise | | | | | | | | | | | | | | | | | 1 |
| " | | | | | | | | | | | | | | | | | 1 |
| Lic. (ou doct.) | | | | | | 1 | 3 | 4 | | | 1 | 3 | 4 | | | | 8 |
| " | | | | | | | 1 | | | | | | | | | | 1 |
| Lic.-maîtr. ou doct. | | | | | | 3 | | | | | 1 | 2 | | | | | 3 |
| Licence | | | | | | | | | 1 | | | | | 1 | | | 1 |
| Maths Phys. | | | | | | | | | | | | | | | | | 1 |
| Lic.-maîtr. ou doct. | | | | | 2 | | 1 | | | | 2 | | | | | | 2 |
| doctorat | | | | | | | 3 | | | | | | | | | | 3 |
| Sc. Physiques | | | | | | | | | | | | | | | | | 1 |
| Lic.-maîtr. ou doct. | | | | | 1 | | | | | 1 | | | | | | | 1 |
| Licence | | | | | | | | | | | | 1 | | | | | 1 |
| " | | | | | | | | 1 | | 1 | | | | | | | 1 |
| ingénieur | | | 1 | | | | | | | 1 | | | | | | | 1 |
| Phys. et Sc. ingén. | | | | | | | | | | | | | | | | | 1 |
| Lic. ou doct. | | | | | 1 | | | | | 1 | | | | | | | 1 |
| Scien. Natur. | | | | | | | | 2 | | | 1 | | | | | | 3 |

18 Pédagogie

28 Maths et Phys

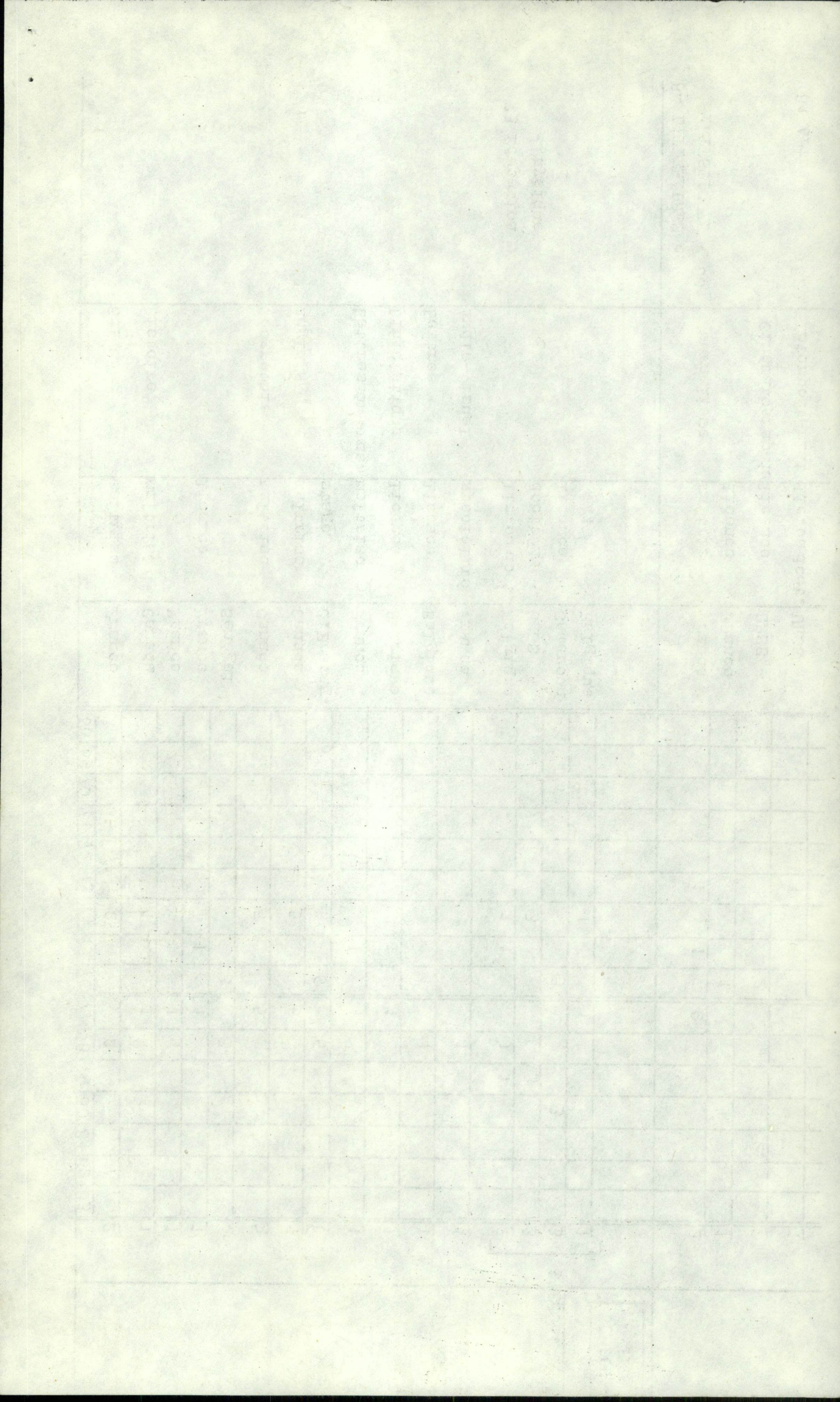
1910
1911
1912
1913
1914
1915
1916
1917
1918
1919
1920
1921
1922
1923
1924
1925
1926
1927
1928
1929
1930
1931
1932
1933
1934
1935
1936
1937
1938
1939
1940
1941
1942
1943
1944
1945
1946
1947
1948
1949
1950
1951
1952
1953
1954
1955
1956
1957
1958
1959
1960
1961
1962
1963
1964
1965
1966
1967
1968
1969
1970
1971
1972
1973
1974
1975
1976
1977
1978
1979
1980
1981
1982
1983
1984
1985
1986
1987
1988
1989
1990
1991
1992
1993
1994
1995
1996
1997
1998
1999
2000
2001
2002
2003
2004
2005
2006
2007
2008
2009
2010
2011
2012
2013
2014
2015
2016
2017
2018
2019
2020
2021
2022
2023
2024
2025

| | 68 | 69 | 70 | 71 | 72 | 73 | 74 | 75 | 76 | 77 | 78 | 79 | 80 | 81 | 82 | 83 | |
|-------------------------------|----|----|----|----|----|----|----|----|----|----|----|----|----|----|----|----|---|
| Sciences | | | | | | | 2 | | | | 2 | | | | | | 2 |
| Histoire | | | | | | 1 | | 1 | | 1 | | | | | | | 1 |
| | | | | | | | | 1 | | 1 | | | | | | | 1 |
| | | | | | | | | 1 | | 1 | | | | | | | 1 |
| Géographie | | | | | | | 5 | | | 5 | | | | | | | 5 |
| Anglais | | | | | | | 5 | | 6 | 5 | | | | | | | 5 |
| Lettres Modernes | | | | | | | | 1 | | 1 | | | | 6 | | | 6 |
| Linguistique | | | | | | | | 1 | | 1 | | | | | | | 1 |
| Lettres | | | | | | | | | 1 | | | | 1 | | | | 1 |
| Audio-visuel | | | | | | | | | 1 | | | | | | | | 1 |
| 73 Education Physique | | | | | | | | | | | | | | | | | 2 |
| | | | | | | | 1 | 1 | | | 1 | 1 | | | | | 3 |
| | | | | | | | 3 | | | | | 3 | | | | | 3 |
| | | | | | | | 1 | | | 1 | | | 3 | | | | 3 |
| | | | | | | | | | | 1 | | | | | | | 1 |
| 8- LITTÉRAIRES et ARTISTIQUES | | | | | | | | | | | | | | | | | 2 |
| 801 Journalisme | | | | | | 1 | | 1 | | 2 | | | | | | | 2 |
| | | | | | | | | | 1 | | | | 1 | | | | 1 |
| 803 Cinématographie | | | | | | | | | 2 | | | | | | | | 2 |
| 81 Arts | | | | | | 1 | | | | 1 | | | | | | | 1 |

77 ENSEI
GENE

9 Educ. Phys

86 FORMS
PEDAG



| | | | | | | | | | | | | | | | | | | | |
|-----------|-------------------|------------|-----------------------------|----|----|----|----|----|----|----|----|----|----|----|----|----|----|----|----|
| 83 | Bibliothéconomie | Licence A1 | France Belgique | 68 | 69 | 70 | 71 | 72 | 73 | 74 | 75 | 76 | 77 | 78 | 79 | 80 | 81 | 82 | 83 |
| 89 | Muséologie | Licence A1 | Sénégal Sénégal Niger | | | | | | | 3 | 2 | 1 | 1 | | | | | | |
| 99 Divers | Philologie romane | Licence | Belgique | | | | | | | | | 1 | | | | 1 | | | |

rentreront en

| | | | | | | |
|-----|-----|----|----|----|----|----|
| 77 | 78 | 79 | 80 | 81 | 82 | 83 |
| 146 | 153 | 98 | 65 | 23 | 15 | 1 |

TOTAL
501
GENEVE

16 L
A

| | |
|-------------------------|---------------------|
| Pays hôtes : | |
| URSS (157) | RFA (20) |
| Belgique (135) | Italie (17) |
| France (46) | Zaire (16) |
| Sénégal (23) | RDA et Cameroun (3) |
| Roumanie et Canada (22) | Suisse (14) |
| | Uganda (8) |
| | Chine et Niger (1) |
| | gde Bretagne (6) |
| | Kenya (4) |
| | Maurice (2) |
| | Chine et Niger (1) |

NOTA : Les formations en mathématiques, physique, histoire, géographie, anglais, sciences, sciences naturelles, destinées probablement à de futurs professeurs dans ces disciplines, ont été classées dans la rubrique 7 des formations pédagogiques.

En 1976 (seule année où cet élément est connu) sur 100 boursiers partis :
85 garçons et 15 filles.

